

Operating a Kiln

1. Kiln Sitter or Kiln Master

Identify the type of kiln you are using. Kilns are either manual, kiln sitter, or computerized, kiln master.

Kiln Sitter	Kiln Master
 <p>-needs to be turned up manually -uses junior cones in the sitter -kiln will shut down when cone is melted</p>	 <p>- program will automatically turn the kiln up</p>

2. Pre-firing Check Make sure the kiln is clear of objects. The kiln reaches very high temperatures, so objects on or near the kiln could catch fire.

3. Clay

-**Do not** put wet clay in the kiln. It can **explode** and damage the kiln.

-Before loading pieces into the kiln, do the kiss test.

Kiss test- put the piece up to your chin; if it feels cold, the piece is too wet to put in the kiln.

4. Bisque vs. Glaze Loads

Bisque	Glaze
-turns the clay pieces into ceramic pieces -can touch each other in the kiln *you will be able to fit more pieces in your kiln for a bisque load than a glaze load.	-adds colour and shine to a bisque piece -glazed pieces can't touch in the kiln, or they will stick together. Bottoms of the pot must NOT have glaze on them.

5. Loading the kiln

The bottom shelf must be at least an inch off the bottom of the kiln. Use at least 3 posts on the bottom shelf. Posts should be placed near the edges of the shelf and spread apart evenly. Make sure the posts are tall enough so that the bottoms of the shelves do not touch the pieces. Keep adding posts and shelves until your kiln is full. If the pieces are different heights you may use half shelves instead of full shelves.

6. Setting the Kiln Sit



This is what the kiln sitter looks like before it is set.

Flip the metal plate up.



While holding the metal plate up, press the switch down. This will lift the top prong on the inside of the kiln.



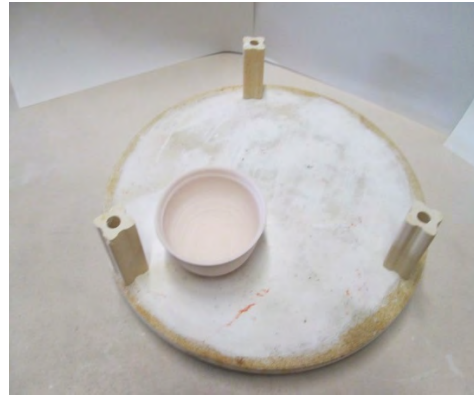
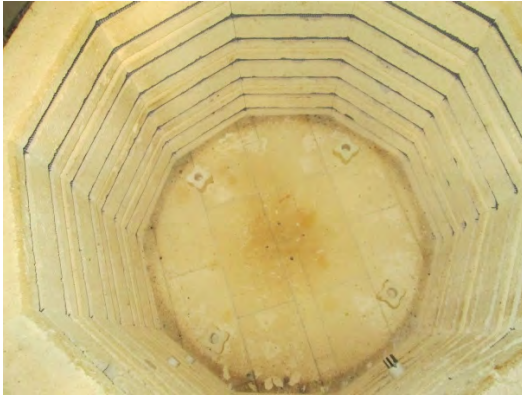
Insert the cone in between the three prongs.



Once the cone is inserted, the switch will hook on to the metal plate on the outside of the kiln. The kiln sitter is now set.

7.

How to Load a Kiln



Put 1" posts on the bottom of your kiln, and then put in your first shelf.

Put at least 3 posts around the edge of your shelf. Fill the shelf with as many pieces as you can, while leaving a 1" space around the edge of the shelf.



When the shelf is full, put another shelf on the posts. Make sure you are using posts tall enough to clear your pieces.

If your pieces are varying sizes, you can use a half shelf. This can often be a more efficient use of space.



This is roughly what your kiln will look like inside when it is loading is complete. *Notice the kiln post are in line which makes your kiln shelves more stable.

Firing your Kiln (Manual Kiln)

Once you have your kiln loaded whether it is bisque or a glaze load

1. Make sure the lid is closed on your kiln
2. Close all of the peep holes in the front of your kiln
3. Turn on your venting system.
4. Turn your control panel turn the knobs to Low
5. After 2 hours turn your controls up to Medium
6. After 2 more hours turn your controls to High.

You have now completed your turn ups. Allow the kiln to fire and shut off on its own.

At cone 06 loads should take 6 to 10 hours.

Important

Safety: always make sure to check that your kiln has turned off after 12 hours. If it hasn't, turn it off manually.

Firing your Computerized Kin

Once you have your kiln loaded whether it is bisque or a glaze load

1. Make sure the lid is closed on your kiln
2. Close all of peep holes in the front of your kiln
3. Turn on your venting system.
4. Follow the instruction on the control panel.

At cone 06 loads should take 6 to 10 hours

Important

Safety: always make sure to check that your kiln has turned off after 12 hours. If it hasn't, turn it off manually.

Unloading your Kiln

1. Allow your kiln to cool completely (about 24hrs. you should be to touch the pieces with your bare hands)
2. Carefully unload pots and shelves.

For Teachers

For most kids projects it is recommended that you use a low fire clay. This means clay that fires to cone 04 to 06. Therefore you would use low fire glaze as well. This is important so that your projects turn out and you fire your kiln to the proper cone.

If you have any questions or concerns about clay, glazes or firing your kiln, please feel free to give us a call or email.

Thanks and Happy Potting,

Teresa Bzowy



TREE POTTERY SUPPLY

#4 318-105th St. E.
Saskatoon Sask. S7N 1Z3
Ph: 306 664 8733 Fax: 306 664 2493
Email: treepottery@sasktel.net

Skutt Kilns

Link www.skutt.com

